

**Paper Reference(s) 1SC0/1BH**  
**Pearson Edexcel Level 1/Level 2**  
**GCSE (9–1)**

**Combined Science**  
**PAPER 1**  
**Higher Tier**

**Tuesday 16 May 2023 – Morning**

**Diagram Booklet**

**In the boxes below, write your name, centre number and candidate number.**

<b>Surname</b>					
<b>Other names</b>					
<b>Centre Number</b>					
<b>Candidate Number</b>					

## **INSTRUCTIONS**

**There may be spare copies of some diagrams in case you need them.**

**THIS DIAGRAM BOOKLET MUST BE  
RETURNED WITH THE QUESTION PAPER  
AT THE END OF THE EXAMINATION.**

# **Contents**

## **Page**

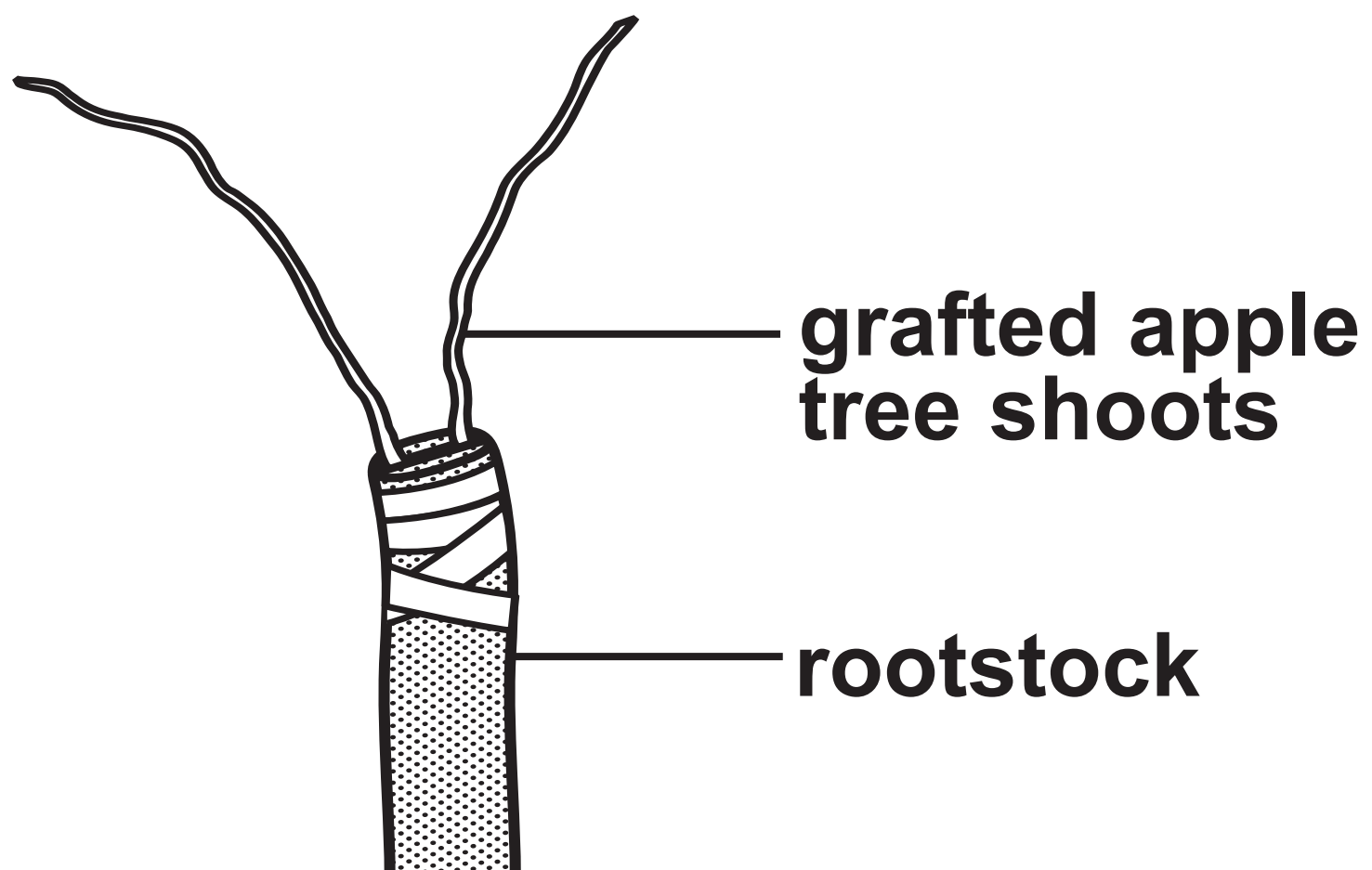
<b>4</b>	<b>Question 1(b)</b>
<b>5</b>	<b>Question 2(a)</b>
<b>6</b>	<b>Question 3(a)</b>
<b>7</b>	<b>Question 3(b)(i)</b>
<b>8</b>	<b>Question 3(c)</b>
<b>9</b>	<b>Question 4(a)</b>
<b>10</b>	<b>Question 4(c)</b>
<b>11</b>	<b>Question 5</b>
<b>12</b>	<b>Question 5(a)</b>
<b>13</b>	<b>Question 6(b)</b>

## **Spare Copies**

<b>14</b>	<b>Question 4(c)</b>
-----------	----------------------

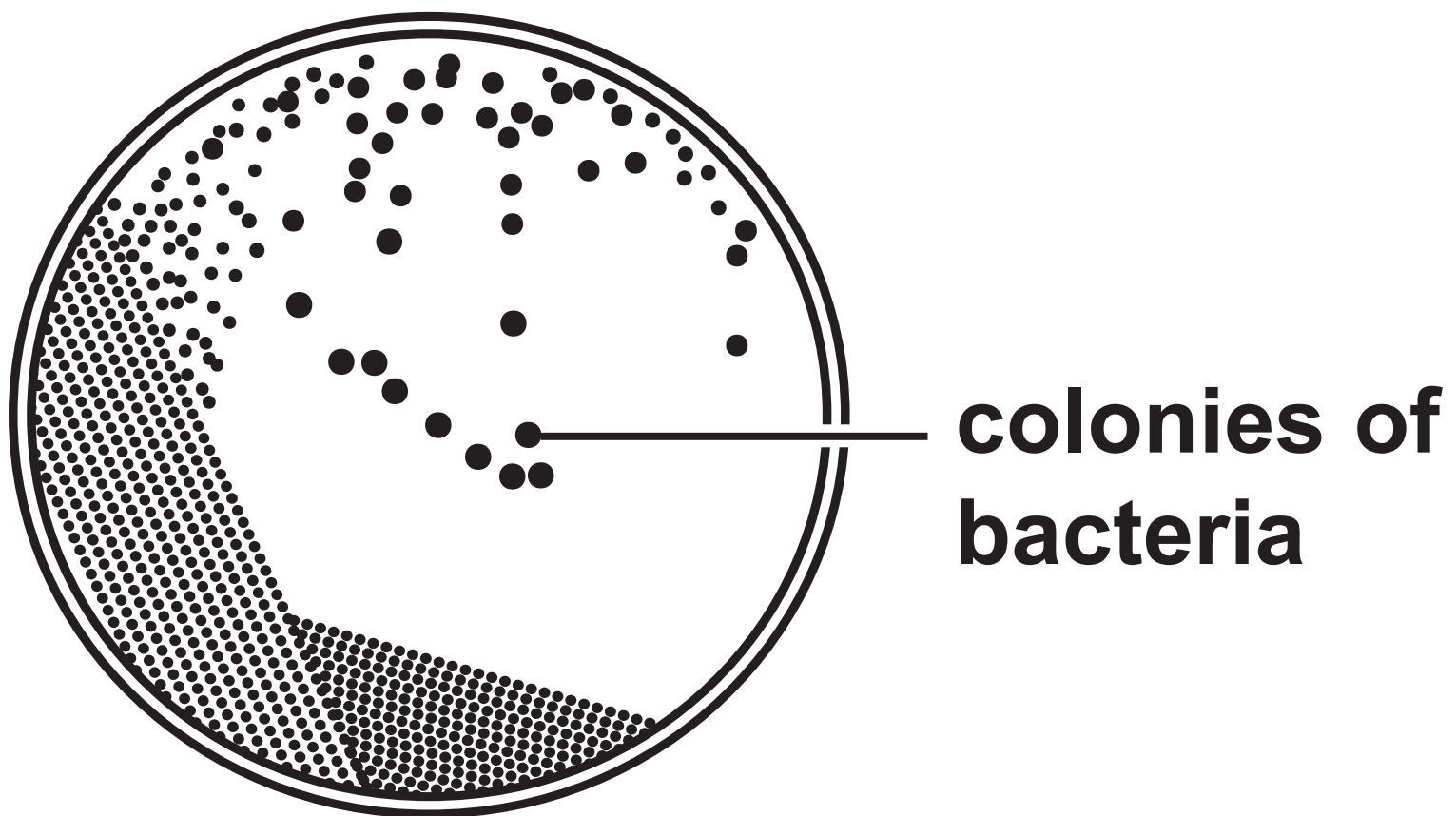
## Question 1(b)

**FIGURE 1**



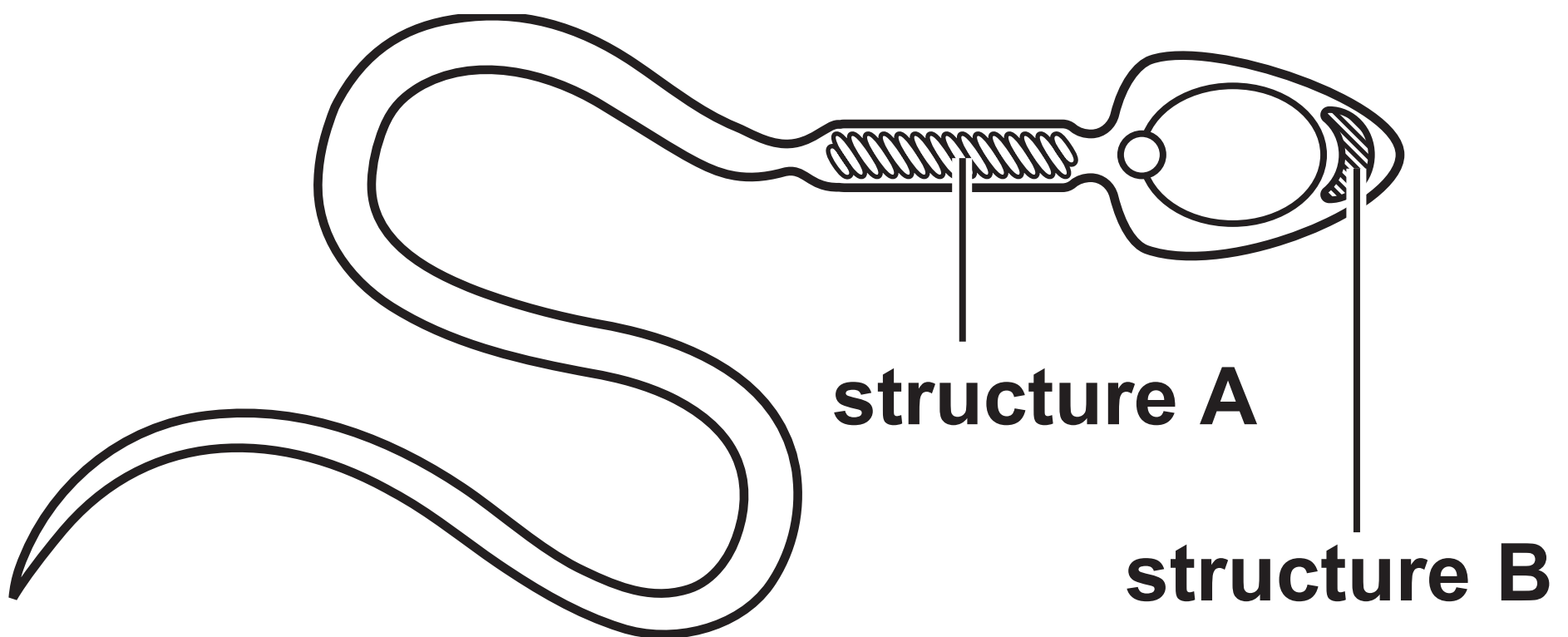
## Question 2(a)

**FIGURE 2**



## Question 3(a)

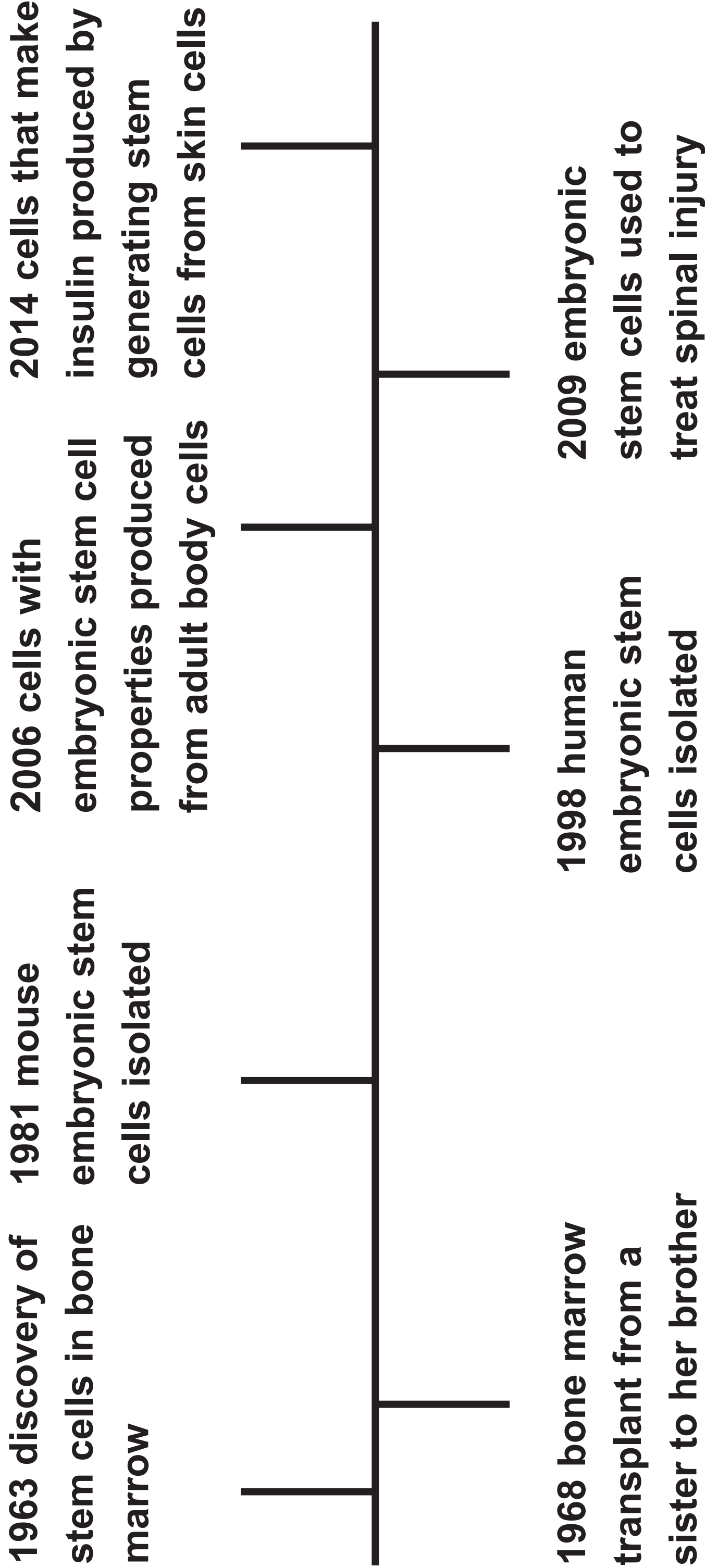
**FIGURE 3**



## Question 3(b)(i)

- A   metaphase → prophase → anaphase → telophase**
- B   prophase → metaphase → anaphase → telophase**
- C   anaphase → prophase → metaphase → telophase**
- D   prophase → anaphase → metaphase → telophase**

FIGURE 4





## Question 4(a)

**The black and white photograph shows a bird with mottled feathers and a long, pointed bill standing on a piece of driftwood on a body of water. It has long legs and talons.**

**FIGURE 5**

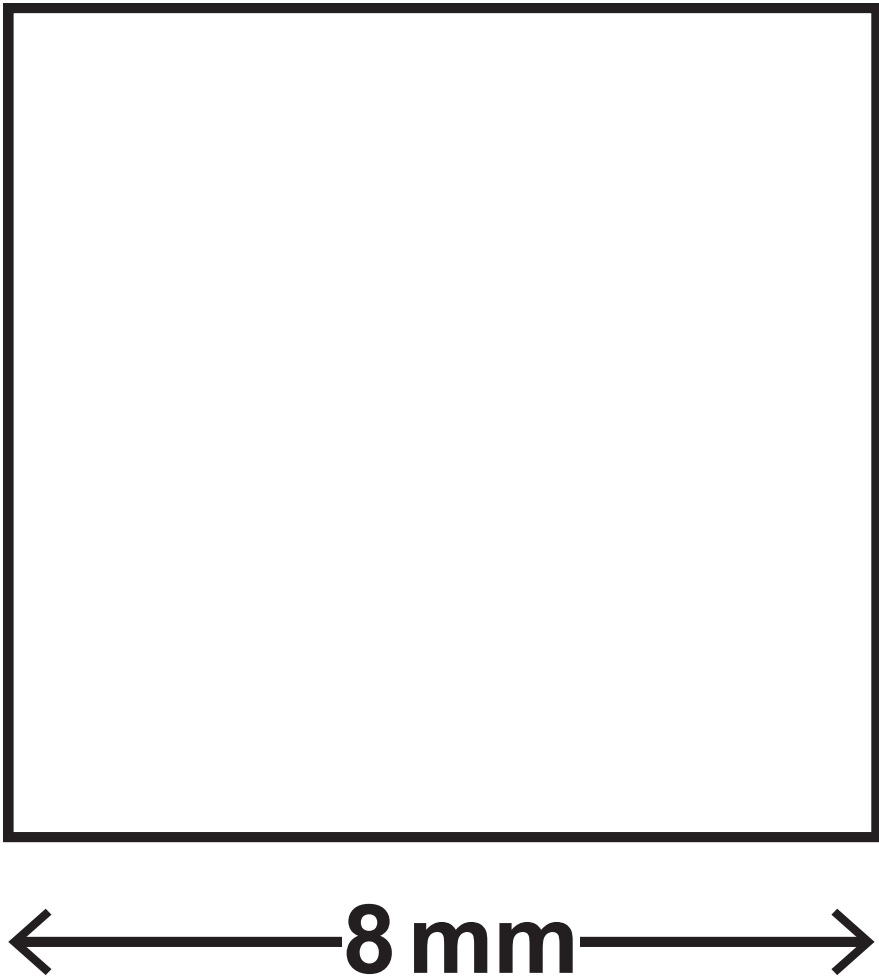


Question 4(c)

		male	
female			

Question 5

FIGURE 6



Question 5(a)

FIGURE 7

	starting mass in grams	final mass in grams
water	0·95	1·08
dilute salt solution	0·95	0·98
concentrated salt solution	0·94	0·88

Question 6(b)

FIGURE 8

measurement	data	guidance
BMI	28	18–25 healthy 26–30 overweight 30+ obese
waist : hip ratio	0.85	<0.9 healthy >0.9 abdominal obesity
alcohol units	3–4 units per day	<14 units per week
number of cigarettes smoked	0	do not smoke or vape

Question 4(c)

		male	
female			

## **Question 1(b)**

**Adapted from © ATTILA Barsan/  
Shutterstock**

## **Question 2**

**Adapted from © Chatchouliya/Shutterstock**

## **Question 4(a)**

**© Ildiko Laskay/Shutterstock**